

CASART

E N E W S L E T T E R

<p>Inspirations <i>Design Ideas</i></p> <p>Page 1</p>	<p>How to <i>Screens</i></p> <p>Page 2</p>	<p>Latest Projects <i>Cabinetry Refacing</i> <i>Modern Decor Finishes</i> <i>Public Art Mural Dedication</i></p> <p>Page 3</p>	<p>What's new <i>Rust Patina</i> <i>Website Update</i></p> <p>Page 4</p>
---	--	--	--

HOUSE/ART NEWS YOU CAN USE

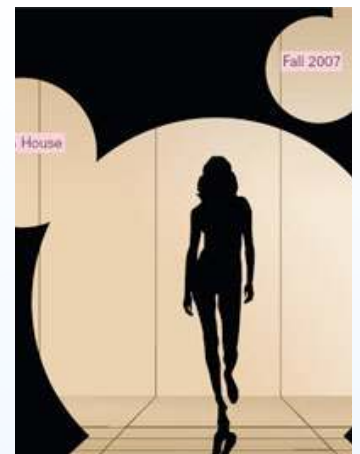
by C. Ashley Spencer

The Circle Never Ends

• Well, that was the message in the [Fall "Fashion" Design House at the Washington Design Center](#). The overlying theme was fashion but a more subtle "circle" theme was carried out cleverly in most of the designer showrooms: from circular stools to round tables to feather ball chandeliers and concave mirrors, curved back sofas and chairs. Amid an overwhelmingly modern decor, there were throwbacks to the black and white glamour of the 30's and 40's, classic Coco Chanel, 70's groove, 80's luxe and 90's lounge--all in a thoroughly contemporary application. Some of the modern features displayed included a paneled, "antiqued" mirrored screen, which can be achieved by "aging" the mirrors with a special [mirror patina](#) solution featured in my last [eNewsletter](#) as well as on my website. Other dramatic elements included damask patterned wallpaper (which can be reproduced with a custom stencil); paneled doors with struts painted black; bold, vivid colors and sophisticated cream, browns and taupe; gilded, metallic walls; and mirrored and [shimmerstone](#) surfaces.



The conception was modern and the circle reminded us to reflect on what design inspirations came before and what's to come in the future. Design, like a circle, never ends, it just changes. Some styles come back in fashion while others are completely new with modern technology and advances.



Fall Fashion Design House

[Washington Design Center](#)
September 28 - December 15, 2007

HOW TO

Build a Screen



Besides being a very functional furnishing to partition rooms or conceal clutter, screens are a versatile decorative device. They are relatively simple to make. They can be painted on both sides with different colors or images, and reversed to change the decor of a room at whim.

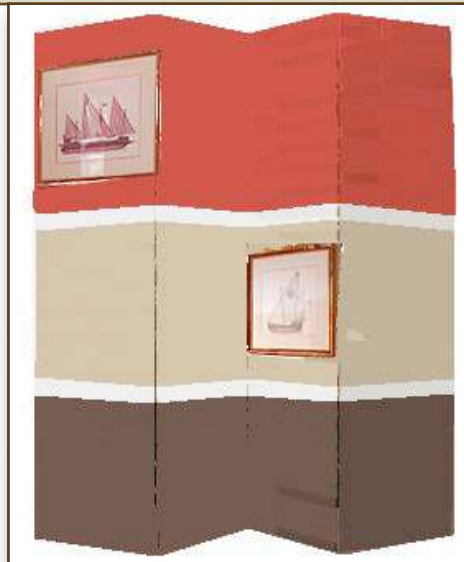
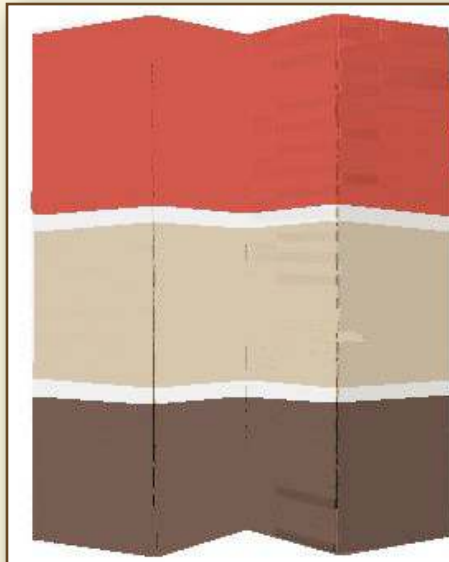
To Make one

- Cut three or more 1/4" - 1/2" thick panels to height and size desired, using a smooth board like MDO (medium density overlay--plywood used for outdoor signage with one or two smooth sides). This can be found at a specialty home supply store (e.g. Smoot in Alexandria, VA).
- Prime front and back of each panel and paint with a high quality, smooth-settling white or colored basecoat, such as Benjamin Moore's waterborne Impervo.
- From here the rest of the design is up to your imagination (just a few ideas are pictured at right).

- Hinge together with panel hinges.
- Add small footers or sliders to the base to make it easy to maneuver.
- Stand up and enjoy.

Sadly, House & Garden magazine has ceased

publication. Screens were featured in their November issue.



- Here's a basic wood screen "painted" with colors I used in the [horizontal striped bedroom](#) on my website. The screen could be a solid color on the other side or even upholstered in linen and pictures, as shown here, can be mounted.

- Patterned fabric or stencils

can be used.
• They can be gilded for high drama sheen, perfect for a dining room.



- Screens can accommodate images blown up and printed on canvas.
- Or better yet, they can have a custom mural painted on one or both sides, as I've shown here in a manipulated image using one of my [murals](#) transposed on top of a basic screen image.



LATEST PROJECTS



Cabinetry Refacing

As mentioned on my website, what does one do with outdated, stock kitchen cabinets? This is an increasingly popular technique: first create the look of paneled cabinetry by adding one half-quarter round molding to the front surface, then priming, filling in nail heads and adding two coats satin waterborne Impervo paint. This paint was previously only available in oil base, but is now offered in the same quality but in an environmentally friendly and convenient waterborne solution. These cabinets pictured above were originally flat-paneled blue. With the addition of molding and a brushed-on glazed finish, these cabinets look brand new and the kitchen seems more spacious and inviting.

Follow these new weblinks, at the headings, to view more pictures. I have added these additional pages to my site.

Modern Decor Finishes

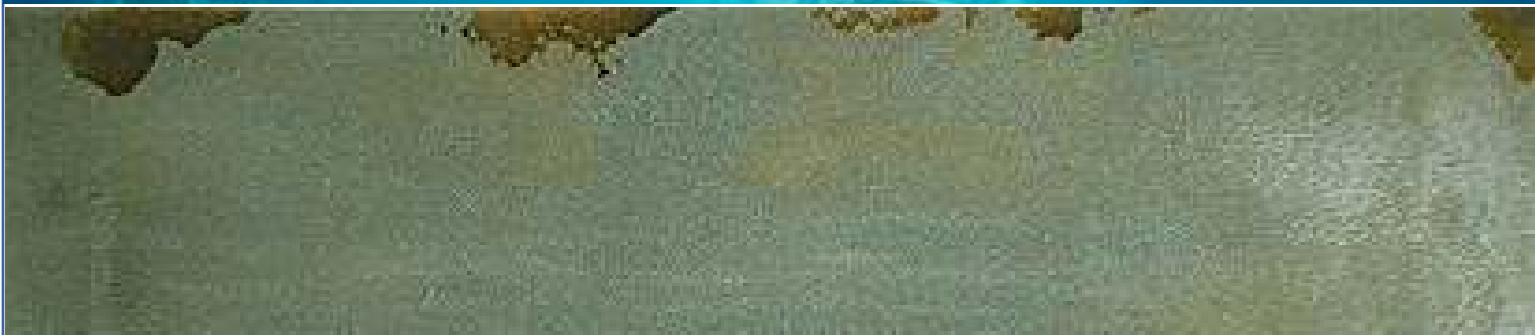
I recently treated four rooms in a contemporary condo in Washington, DC. The walls were typical contractor's white. The space seemed stark and sterile. The client wanted something to enliven the rooms and create interest. We chose a metallic, brushed-on finish for one large 24 foot long wall in the main room. This would create a focal wall that complemented the decor and yet was still neutral for future resale. For the guest bathroom, which happened to be the first room off the entry, we chose complementary tones of rust to match the marble countertops, and treated one focal wall in a faux padded harlequin. The bedroom had a structural pillar. Rather than trying to hide the obvious, we chose to paint it in a faux Carrara marble. This complemented the cool grays, blues, mirrored and dark wood furniture in the room. Finally, the master bathroom lacked interest, so we treated it with a silver, metallic colorwash that picked up the colors in the marble countertop veining.

Public Mural Dedication

The 50 foot long outdoor, public mural that I painted for [Jefferson Houston School](#) has been installed and the dedication was in early December. The students were kind to draw pictures of what the mural means to them and I received a large hand drawn card in appreciation. Kimberly Graves, the principal did the honors and Omar Gales, representing Potomac Paints, was present to receive a much deserved certificate for donating the majority of the paint for the project.



WHAT'S NEW



Rust Patina

Modern Masters has a new textured product that produces a beautiful, shimmery, rust patina that would be stunning in a French or Provençal decor as well as a contemporary one. It can be achieved in a multitude of colors using custom tints.

This finish, along with five new decorative treatments that depict texture in multicolored hues, have been added to the [Sample Finishes](#) page of my website.

Website Update

Besides the additions of the Cabinet and Modern Finishes pages, I have added a [Services](#) page along with a link to a television interview on [HouseSmarts](#) that aired in the fall on the Articles/Art News page and the Faux House page.

This photo has been added to the [Sample Finishes](#) page on my website to view in detail. This [eNewsletter](#) is downloadable on my website.

C. Ashley Spencer is an artist -- decorative painter, muralist and illustrator. She lives in Old Town, Alexandria, Virginia. She has been working throughout the DC metropolitan area as well as in her studio for 19 years. She can be contacted through her website: www.ashley-spencer.com

CASART ENEWSLETTER

121 Harvard Street

Alexandria, VA 22314